



Hamnett Court, Birchwood, Warrington

Offers In Excess Of £90,000

Open For Buy To Let Investors & Residential Buyers

Tucked away in Hamnett Court, this cheerful two-bedroom apartment is the kind of place that quietly gets on with being a great home. No flashy gimmicks here, just a comfortable, well-laid-out space that's ready for its next chapter.

Step inside and you'll find a welcoming living area that's perfect for putting your feet up after a long day, catching up on your favourite shows, or hosting the occasional takeaway night. The two good-sized bedrooms offer flexibility, whether that's a peaceful night's sleep, a home office, or a bit of both.

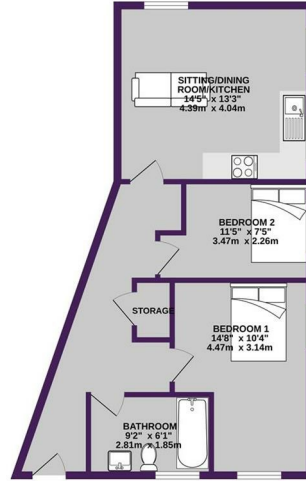
The bathroom is practical and does exactly what it says on the tin, and with parking for one car, you won't be fighting for a space when you get home, always a win.

Location? That's where this one really shines. Sitting right in the heart of Birchwood, you're just a short stroll from the train station and close to major motorway links, ideal for commuters, explorers, and anyone who likes their journeys stress-free. Add in nearby shops, cafés, and leisure facilities, and you've got everyday convenience well and truly covered.

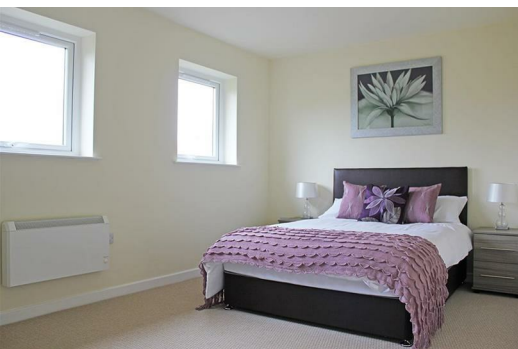
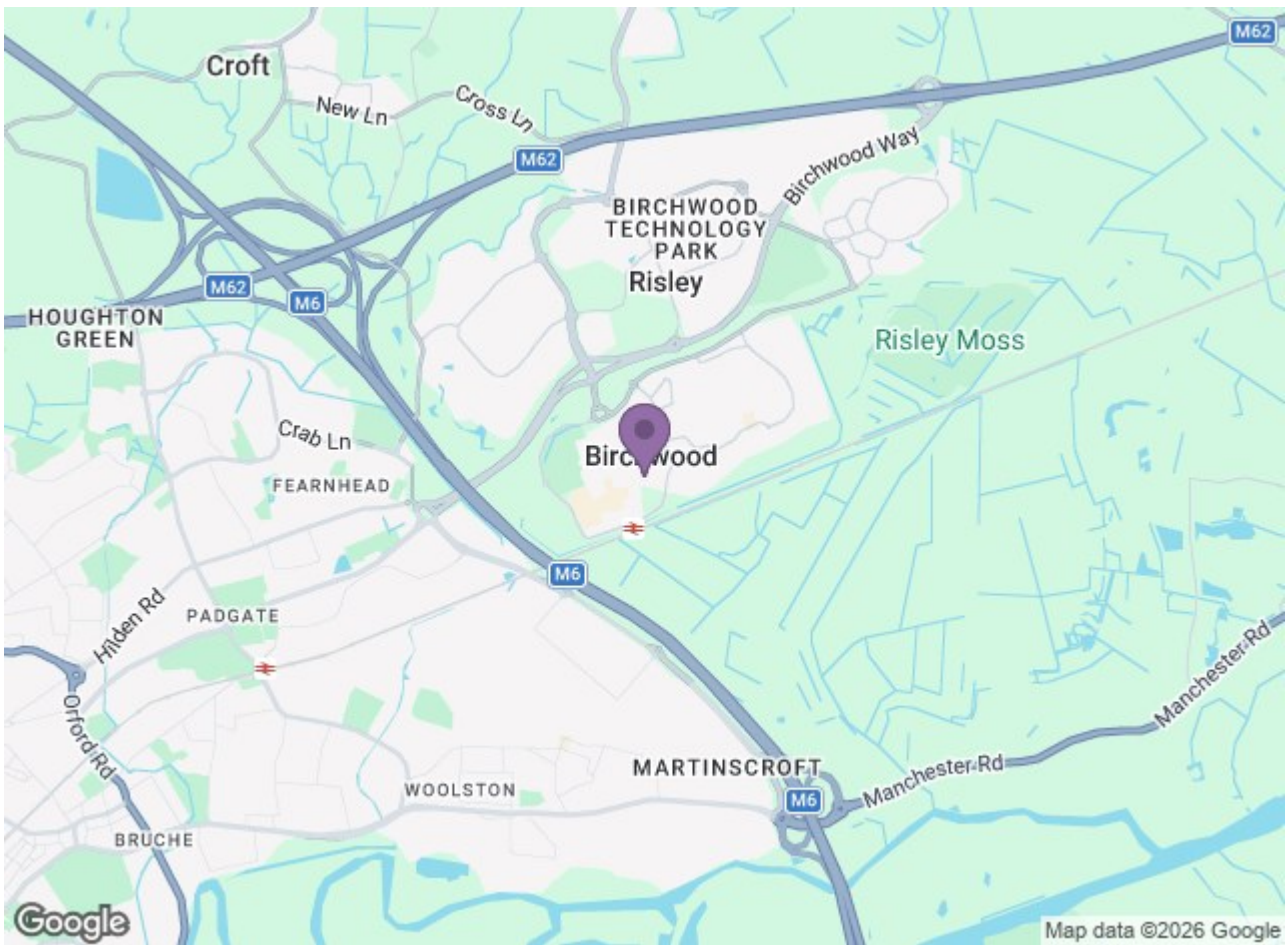
Whether you're a first-time buyer looking for a place to call your own or an investor hunting for a solid, sensible addition to the portfolio, Hamnett Court is proof that sometimes the best homes don't shout, they simply invite you in.



GROUND FLOOR
593 sq.ft. (55.1 sq.m.) approx.



TOTAL FLOOR AREA: 593 sq.ft. (55.1 sq.m.) approx.
 While every effort has been made to ensure the accuracy of the floorplan, please note that measurements are taken at the time of construction and may vary slightly from the actual measurements. The floorplan is provided for information only and should not be used as a basis for any legal proceedings. We do not warrant the accuracy of the floorplan and we do not accept any liability for any errors or omissions. Please contact us for more information. © Ascend 2026



Energy Efficiency Rating		Environmental Impact (CO ₂) Rating	
Band	Score	Band	Score
A	92	A	10
B	81	B	9
C	69	C	8
D	55	D	7
E	39	E	6
F	15	F	5
G	9	G	4

England & Wales